

HIGH PURE HPE

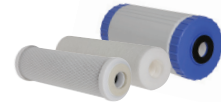


- 1 Sedimentation filter.**
It eliminates from water the particles bigger than 5 micron.
- 2 Active carbon filter.**
It eliminates the chlorine to protect the reverse osmosis membrane.
- 3 Reverse osmosis membrane.**
It eliminates up to 98% of impurities and salts.
- 4 Deionizing resin cartridge.**
It removes the residual salts, bringing their concentration to 0 ppm.

STANDARD EQUIPMENT



REVERSE OSMOSIS MEMBRANE
CODE FTAC40002



FILTER KIT: 1 SEDIMENTATION FILTER, 1 ACTIVE CARBON FILTER, 1 DEIONIZING RESIN CARTRIDGE - CODE KTRI40106



30 M FLEXIBLE HOSE WITH FITTINGS
CODE TBFX40009



HAND HELD TDS METER
CODE AZMC40006



GASKET LUBRICANT
CODE CNPR40007



FLOW REGULATION VALVE
CODE VVSF40011



POWDER FOR OSMOTIC MEMBRANE FILTER MAINTENANCE - CODE PRCH40034

PF EN LL PP MM
POWER FILTER RGNOMICS LONG LIFE POWER PUMP MANOMETER



PURE WATER CLEANING SYSTEMS

HPE

Code APTA40015

TECHNICAL DATA

| | | |
|---------------------------------|-------------------|------------------------|
| Operating pressure | bar | 6-7 |
| Pure water flow | l/min | 2-6 |
| Water in/out connections | GAS | 3/4" |
| Max. poles length | m | 16 (also with 2 poles) |
| Productivity | m ² /h | up to 200 |

ELECTRICAL FEATURES

| | | |
|-----------------------|---------|----------|
| Power supply | Ph-V-Hz | 1-230-50 |
| Absorbed power | kW | 0,55 |

DIMENSIONS & WEIGHT

| | | |
|---------------------------|----|-----------|
| Weight | Kg | 45 |
| Dimensions (LxWxH) | cm | 53x50x127 |

POLES AND ACCESSORIES

CODE

MODULAR POLES

| | | |
|-----------|-------------------|--|
| KTRI40280 | Kit Quick Lock 10 | 10 meters carbon fiber modular pole kit - 6 sections of 1.5 m (LCPR40022), 1 section of 0.75 m (LCPR40083) |
| KTRI40281 | Kit Quick Lock 16 | 16 meters carbon fiber modular pole kit - 10 sections of 1.5 m (LCPR40022), 1 section of 0.75 m (LCPR40083) |

Single components included in the kit



| | | |
|---|-----------|--|
| 1 | LCPR40022 | carbon fiber 1.5 m section (700 g) |
| 2 | LCPR40083 | carbon fiber 0.75 m section with threaded terminal (484 g) |
| 3 | MPVR40229 | caddy |
| 4 | TBFX40003 | 20 m flexible hose with fittings |
| 5 | RCVR40107 | 5 cm adapter for speed brush coupling on plastic gooseneck |
| 6 | RCVR40053 | fitting with gasket |

TELESCOPIC POLES



| | | |
|-----------|-------|--|
| LCPR40097 | PGG07 | 6 meters glass fiber telescopic pole kit |
| LCPR40098 | PGG12 | 10.5 meters fusion telescopic pole kit |
| LCPR40099 | PGG15 | 13.5 meters carbon fiber telescopic pole kit |

Single components included in the kit



| | | |
|---|-----------|--|
| 1 | LCPR40094 | 6 m glass fiber telescopic pole for PGG07 + 20 meters flexible hose (1.6 kg) |
| 1 | LCPR40095 | 10.5 m fusion telescopic pole for PGG12 + 20 meters flexible hose (2.8 kg) |
| 1 | LCPR40096 | 13.5 m carbon fiber telescopic pole for PGG15 + 20 meters flexible hose (4.4 kg) |
| 2 | RCVR40107 | 5 cm adapter for speed brush coupling on plastic gooseneck |
| 3 | RCVR40053 | Fitting with gasket |

GOOSENECKS



| | |
|-----------|--|
| RCVR40048 | gooseneck with 5 cm angular adjustment (67 g) (RCVR40107 adapter required for speed brush installation) |
| RCVR40070 | gooseneck with 25 cm angular adjustment (130 g) (RCVR40107 adapter required for speed brush installation) |

ALUMINIUM GOOSENECKS



| | |
|-----------|--|
| RCVR40104 | adjustable 10 cm aluminium gooseneck (192 g) |
| RCVR40105 | adjustable 20 cm aluminium gooseneck (224 g) |
| RCVR40106 | adjustable 40 cm aluminium gooseneck (269 g) |

ALUMINIUM GOOSENECKS FOR DOUBLE BRUSH

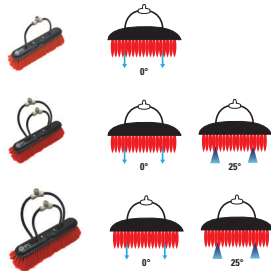


| | |
|-----------|---|
| RCVR40108 | adjustable 10 cm aluminium gooseneck for 2 brushes of 30 cm joined together (364 g) |
| RCVR40109 | adjustable 20 cm aluminium gooseneck for 2 brushes of 30 cm joined together (342 g) |
| RCVR40110 | adjustable 40 cm aluminium gooseneck for 2 brushes of 30 cm joined together (464 g) |

POLES AND ACCESSORIES

CODE

SPEED BRUSH SOFT



| | |
|-----------|---|
| SPID40006 | 30 cm nylon brush with 0° nozzles (482 g) for delicate surfaces |
| SPID40007 | 30 cm nylon brush with 0° and 25° double nozzles (486 g) to better the cleaning operation during rinsing phase |
| SPID40012 | 50 cm nylon brush with 0° and 25° double nozzles (718 g) to increase the operative productivity |

SPEED BRUSH HARD



| | |
|-----------|--|
| SPID40008 | 30 cm natural bristles brush with 0° nozzles (352 g) for non-delicate surfaces |
| SPID40009 | 30 cm natural bristles brush with 0° and 25° double nozzles (432 g) to better the cleaning operation during rinsing phase |

BACK SCRUB (REAR WASHING FLEECE SUPPORT)



| | |
|-----------|---|
| SPPV40029 | 30 cm washing fleece support Technolite |
| SPPV40030 | microtiger: 30 cm microfiber replacement washing fleece to use for a pre-treatment of surfaces to remove the stratified dirt. |
| SPPV40031 | FT12: 30 cm microfiber replacement washing fleece with abrasive strip for a pre-treatment of surfaces to remove the crusted dirt. |

BATTERIES AND BATTERY CHARGERS



| | |
|-----------|---|
| BAAC00120 | 12V 45Ah / C5 battery. running time up to 2 hours |
| BACA00176 | 5A 12V CBHD1 'stand alone' battery charger |
| BAAC00117 | 12V 74Ah / C5 battery. running time up to 4 hours |
| BACA00177 | 10A 12V CBHD2 'stand alone' battery charger |

OTHER ACCESSORIES



| | |
|-----------|--|
| KTRI40112 | Y valve for 2 poles installation |
| RCVR40111 | plastic T valve - standard on speed brush - optional on applications with double brush |
| PRCH40034 | powder for osmotic membrane filter maintenance (standard equipment) Ideal to preserve the integrity and the functionality of the filtrating meshes from the formation of weeds and moulds that could compromise the correct operation of the filter. to use in view of long periods of inactivity. |
| TBBP40040 | flexible hose for telescopic poles and speed brush sold at linear meter |

Warranty

Refer to your local representative for warranty information.

For a demonstration or additional information,
call +39 0421 205511 or email info@ipcleaning.com

IP Cleaning S.p.A.

Viale Treviso 63
30026 Summaga di Portogruaro - (VE) / ITALY
Tel. +39 0421 205511 - Fax +39 0421 204227
info@ipcleaning.com - www.ipcleaning.com

Rights to technical modifications reserved without prior notes.